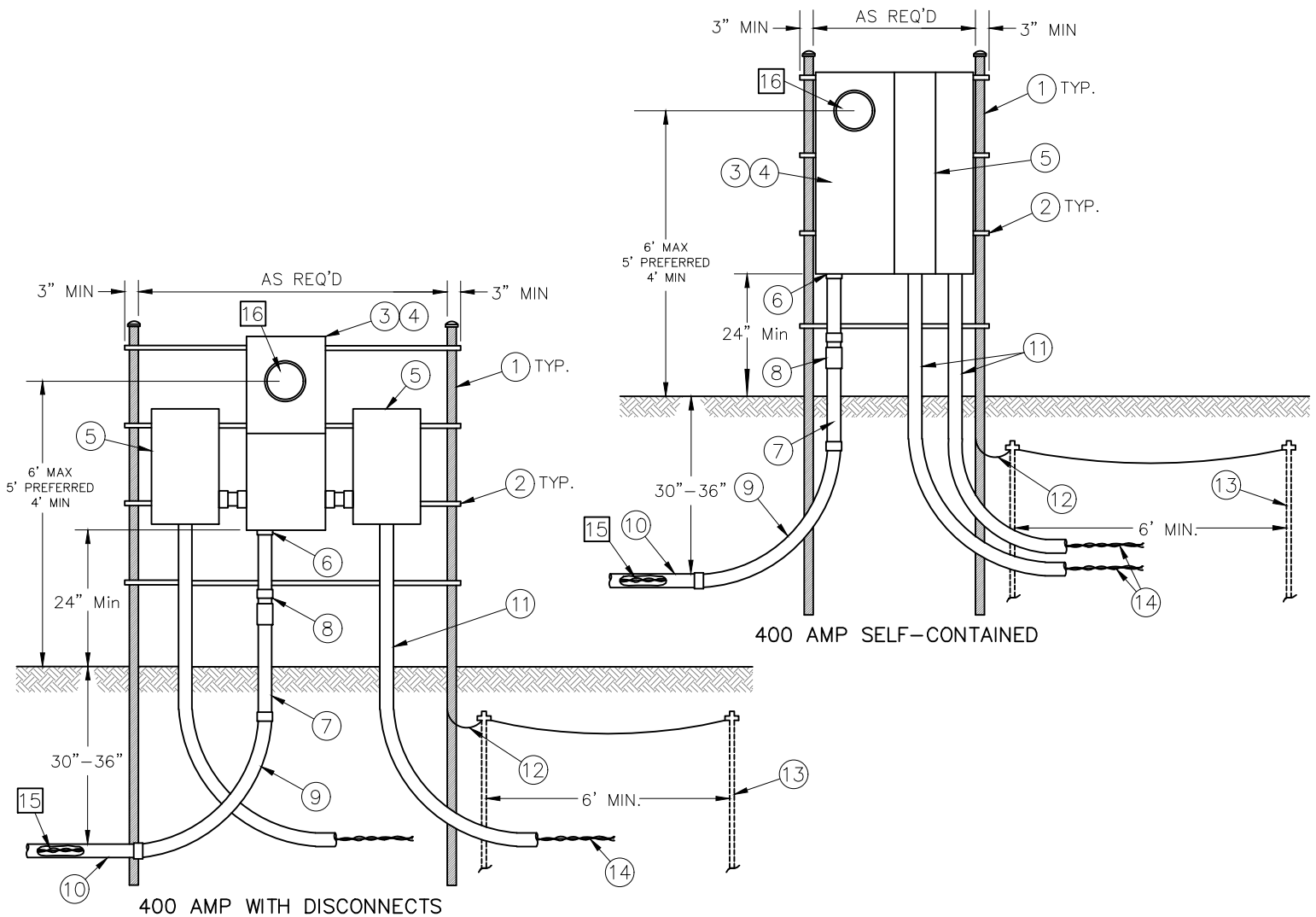




## PERMANENT 400A METER POST

## 2025 EDITION



### PEDESTAL LOCATION REQUIREMENTS:

METER BASE MUST HAVE 10' OF WORKING SPACE IN FRONT.

MINIMUM 10' CLEARANCE TO FRONT & 3' TO THE SIDES AND BACK OF TRANSFORMER.

MAXIMUM OF 150' TOTAL LENGTH FROM PAD MOUNT OR POLE MOUNT TRANSFORMER TO METER PEDESTAL.

### ITEMS INSTALLED BY THE MEMBER:

- 2" GALVANIZED RIGID STEEL CONDUIT WITH CAPS ON TOP (OPTIONAL 6"x6"x10' FULL TREATED POST SUPPORTS PER NEC)
- C CHANNEL STRUT (SPACING AS REQ'D IN ACCORDANCE WITH NEC) PIPE STRAPS CONNECTIONS (OR LAG BOLTS FOR WOOD)
- CLASS 320 METER BASE (LEVER BYPASS REQUIRED)
- METER BASE SUPPLY LUGS MUST SUPPORT #350 KCMIL WIRE
- MEMBER SIDE DISCONNECTS IN ACCORDANCE WITH NEC
- INSULATING BUSHINGS AND LOCKNUT
- 3" SCH 80 GREY CONDUIT, EXTENDING BELOW GRADE
- 3" PVC EXPANSION JOINT, GREY - LOCATED ABOVE GRADE
- 3" SCH 80 24" RADIUS SWEEP MIN.
- 3" SCH 40 GREY CONDUIT FROM IPL EQUIPMENT, (USE SWEDGE STYLE COUPLERS ONLY)
- SERVICE CONDUIT IN ACCORDANCE WITH NEC
- GROUND WIRE IN ACCORDANCE WITH NEC
- GROUND RODS IN ACCORDANCE WITH NEC
- SERVICE CONDUCTORS TO LOAD IN ACCORDANCE WITH NEC

### ITEMS INSTALLED BY THE UTILITY:

- SERVICE WIRE FROM TRANSFORMER TO METER LOCATION
- METER